

Installation notes

When using a PC that has had the DP-DS80D driver installed, the gpd file definition of the paper size (8x10.75) is different from the DP-DS820DX.

Before installing the DP-DS820DX driver, select the "(8x10.75)" paper size from the "Paper" tab of "Print Server Properties" and click "Delete (D)" to delete it.

Chapter 1 Installation

It is almost the same as DP-DS620. See the DP-DS620 driver instruction manual.

Chapter 2 Properties

2.1 Open the printer properties

It is almost the same as DP-DS620. See the DP-DS620 driver instruction manual.

2.2 Print settings functions

2.2.1 Layout

It is almost the same as DP-DS80D. See the DP-DS80D driver instruction manual.

If you select **Advanced...** on the Layout tab, you can configure various advanced options.

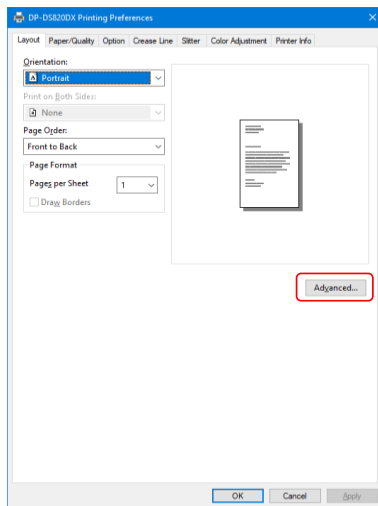


Figure 2.2.2.1 Advanced settings

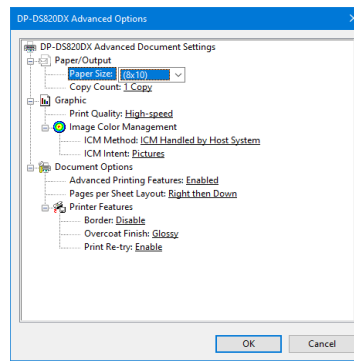


Figure 2.2.2.2 Advanced options tab

Paper Size

Specify the paper size. The paper size that can be specified depends on the media size that is loaded in the printer. Also multiple layout will be automatically used depending on the specified paper size. For details, see <Multiple layout> described later.

In DP-DS820DX, the paper sizes that can be specified differ as shown in the table below, depending on the selection of roll paper/cut paper (tray) in "Paper Source" described in 2.2.3.

Loaded media size	Paper Source	Specifiable paper size	Multiple layout
8x10	Roll Paper	(8x4), (8x5), (8x5)_(8x4), (8x6)_(8x4)	Enable
		(8x6), (8x8), (8x10)	Disable
	Cut Paper	(8x4), (8x5)	Enable
		(8x6), (8x6.5), (8x8), (8x10), (8x10.50), (8x10.75)	Disable
8x12	Roll Paper	(8x4), (8x5), (8x6), (8x5)_(8x4), (8x6)_(8x4), (8x6)_(8x5), (8x8)_(8x4)	Enable
		(8x8), (8x10), (8x12)	Disable
	Cut Paper	(8x4), (8x5), (8x6)	Enable
		(8x6.5), (8x8), (8x10), (8x12), (8x10.50), (8x10.75)	Disable

*1: Paper sizes that cannot be used for printing are grayed out.

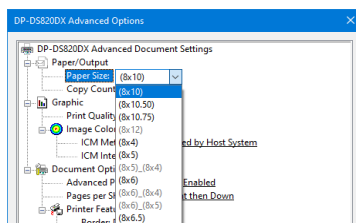


Figure 2.2.2.3 Incompatibility media size
(Gray out indication)

*2: For paper sizes that can create margins on the sides of the output results, a warning appears.

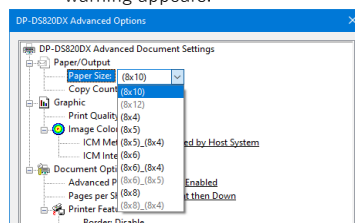


Figure 2.2.2.4 Hide special size for cut paper

Copy Count

You can specify the number of copies to be published for images.

Print Quality

Specify the resolution.

Print quality	Function
High-speed	Print using high speed mode
High-quality	Print using high quality mode

ICM Method

ICM Method	Function
ICM Disabled	Synchronized with "Color Adjustment Disabled" in the 2.2.4 Option.
ICM Handled by Host System	Synchronized with "Color Adjustment ICM" in the 2.2.4 Option. Manage colors using the driver.
ICM Handled by Printer	When this item has been selected, operation is the same as "ICM Handled by Host System".

ICM Intent

Set the rendering method when using ICM. For the ICC profile, always set to "Pictures".

Do not use other settings.

Advanced Printing Features

Always set "Enabled". Do not use other settings.

Pages per Sheet Layout

Set the layout direction of an image when the Pages per Sheet setting is set for multiple divisions.

Border

Synchronized with Border in the Option.

Overcoat Finish

Set the overcoat finish method for the surface of printed items from the following four types.

Overcoat Finish	Function
Glossy	Create an item with a glossy finish.
Matte	Create an item with a matte finish.
Luster	Create printouts with rough surface and semi-gloss finish that has less glare.
Fine Matte	Create printouts with fine grain and strong matte finish.
Light Matte	Although the matte finish is weaker than "Matte", it can be output at a speed close to that of a glossy finish.

Print Re-try

Specify whether to print data in the printer buffer after a printer error has been cleared.

However, it will be disabled during duplex printing.

Print Re-try	Function
Disable	Clear the print data in the printer buffer when a printer error occurs. You must send the cleared print data again after the error is cleared. When you use an application with an error recovery function, select this option.
Enable	Save print data in the printer buffer when an error occurs. The printing process is restarted from the saved data after the error is cleared. Note that if the power is switched off, the data is not saved.

Depending on the printer error, print data in the print buffer will be cleared, regardless of the Print Re-try setting.

The following section shows the operation for each Print Re-try setting by error.

Error content	When Print Re-try is disabled		When Print Re-try is enabled
Side the error occurs on	Roll paper, Cut paper front side	Cut paper back side	Roll paper
Paper end	Please resend picture data not printed after error recovery.		Printing processing is resumed from the data currently held in the printer buffer after error recovery. When paper initialization operation is run, it is printed after the paper initialization operation.
Ribbon end		Regardless of Print Re-try settings, once the error is resolved, printing processing is resumed from data currently held in the printer buffer.	
Cover open		After the error is resolved, resend the print data including the front image.	
Tray open			
No trash box			
Paper jam	To prevent the occurrence of an error, printing will not be restarted, regardless of the Print Re-try function setting.		
Ribbon error	After the printer stops due to an error, follow the User Guide of the printer to eliminate the cause of the paper or ribbon error.		
Paper size setting error	You must send the unprinted image data again after the error is cleared.		
System error • Data error • Head voltage error • Head position error • Power supply fan stopped • Cutter error • Head temperature error • Media temperature error • RFID module error • Creaser unit error • Slitter unit error • Paper feed lever position error • Turn roller position error	Because the printer must be switched on and off to clear the error, the print data in the printer buffer is cleared regardless of the Print Re-try setting. After the printer has restarted, you must send the unprinted image data again.		

2.2.3 Paper/Quality

It is almost the same as DP-DS80D. See the DP-DS80D driver instruction manual.

2.2.4 Option

It is almost the same as DP-DS620. See the DP-DS620 driver instruction manual.

However, the language setting is only Japanese and English.

2.2.5 Crease Line

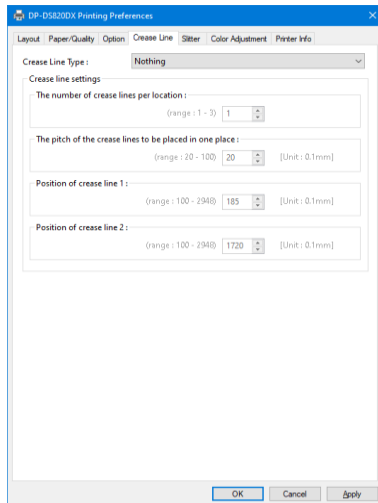


Figure 2.2.5.1 Crease Line tab

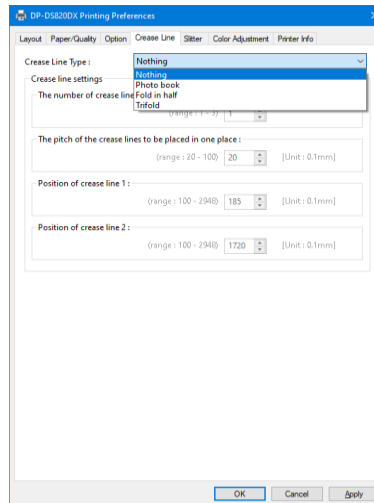


Figure 2.2.5.2 Select Crease Line Type

Crease Line Type

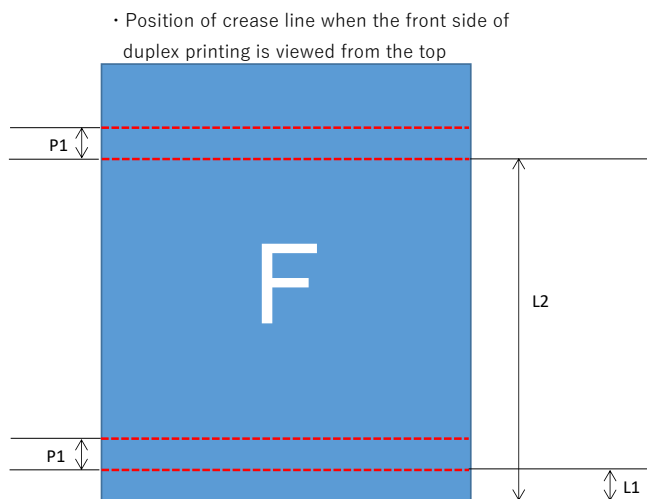
Specifies the crease line type. It is linked with each item of crease line setting.

Valid only for cut paper. The setting is ignored for roll paper.

Crease Line Type	Function
Nothing	Do not add fold lines.
Photo book	Make a crease in one place. The setting items other than the crease line 2 position are enabled.
Fold in half	Make a crease in one place. The setting items other than the crease line 2 position are enabled.
Trifold	Make two crease lines. All setting items are enabled.

Crease line settings

Setting items	Setting range
The number of crease lines per location	Set the number of crease lines to insert in one place. Setting range : 1 to 3
The pitch of the crease lines to be placed in one place	Set the pitch of crease lines to be placed in one place. The unit is 0.1mm. Setting range : 20 to 100
Position of crease line 1	Set the distance from the edge of the paper to crease line 1. The unit is 0.1mm. Setting range : 100 to 2948
Position of crease line 2	Set the distance from the edge of the paper to crease line 2. The unit is 0.1mm. Setting range : 100 to 2948



Placement of crease lines when the crease line settings are as follows.
 The number of crease lines per location : 2
 The pitch of the crease lines to be placed in one place : P1
 Position of crease line 1 : L1
 Position of crease line 2 : L2
 ----- : crease line

2.2.6 Slitter

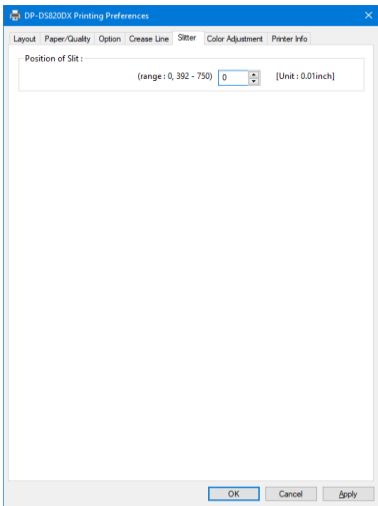
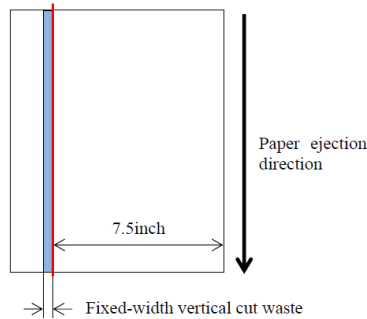


Figure 2.2.6.1 Slitter tab

Position of Slit

Specifies the position of the slit (vertical cut). The unit of setting value is 0.01 inch.
Valid only for cut paper. The setting is ignored for roll paper.

If the paper width is 8 inches and the setting value is 750 (7.5 inches), it will be cut vertically as shown below.



2.2.7 Color Adjustment

It is almost the same as DP-DS620. See the DP-DS620 driver instruction manual.

2.2.8 Printer information

It is almost the same as DP-DS820. See the DP-DS820 driver instruction manual.

Because it is currently under design, status, color control data, etc. may be changed.

2.3 Default values for settings

The following section shows the default values of the settings (at installation). If the settings have been changed, and the printer driver no longer operates normally, return to the default values shown below.

Note) Depending on the service pack of your operating system or your usage environment, the default values at installation may differ from those in the chart below.

Chart 2.3 Default print settings

Tab	Setting			Value
Layout	Orientation			Portrait
	Print on Both Side			None
	Page Order			Front to Back
	Pages Per Sheet			1
Paper/Quality	Paper Source			Roll Paper
	Color			Color
Option	Border			Disable
	Sharpness			0 (Default)
	Color Adjustment			ICM
	Language setting			English
Crease Line	Crease Line Type			Nothing
	The number of crease lines per location			1
	The pitch of the crease lines to be placed in one place			20
	Position of crease line 1			185
	Position of crease line 2			1720
Slitter	Position of Slit			0
Color Adjustment	Gamma			0
	Brightness			0
	Contrast			0
	Chroma			0
Advanced options (In the Layout tab, click "Advanced...")	Paper/Output	Paper Size		(8x10)
		Copy Count		1
	Graphic	Print Quality		High-Speed
		Image Color Management	ICM Method	ICM Handled by Host System
			ICM Intent	Pictures
	Document Options	Advanced Printing Features		Enabled
		Pages per Sheet Layout		Right then Down
		Printer Features	Border	Disable
			Overcoat Finish	Glossy
			Print Re-try	Enable

2.4 Color management

Use Color management to specify the color profile. The installer associates "PD_DS820DX_0010.icc" by default. To use an ICC profile other than the default profile, overwrite the ICC profile that has been registered as the default.

It is almost the same as DP-DS80D. See the DP-DS80D driver instruction manual.

2.5 Print Area

The following section shows the image sizes and numbers of dots generated by the paper size setting of the driver.

Paper size	Image size (width x height)		Number of image dots (width x height)	
	(inch)	(mm)	High-speed (300x300dpi)	High-quality (600x600dpi) *1
(8x4)	8" x 4"	207.3 x 104.6	2448 x 1236	4896 x 2472
(8x5)	8" x 5"	207.3 x 130.0	2448 x 1536	4896 x 3072
(8x6)	8" x 6"	207.3 x 155.4	2448 x 1836	4896 x 3672
(8x8)	8" x 8"	207.3 x 206.2	2448 x 2436	4896 x 4872
(8x10)	8" x 10"	207.3 x 257.0	2448 x 3036	4896 x 6072
(8x12)	8" x 12"	207.3 x 307.8	2448 x 3636	4896 x 7272
(8x6.5)	8" x 6.5"	207.3 x 168.1	2448 x 1986	4896 x 3972
(8x10.50)	8" x 10.5"	207.3 x 269.7	2448 x 3186	4896 x 6372
(8x10.75) *2	8" x 10.5"	207.3 x 269.7	2448 x 3186	4896 x 6372

*1: Convert to 300 x 600 dpi size within the driver, and then send to the printer.

*2: There are margins that are not printed.

2.6 Orientation

It is almost the same as DP-DS80D. See the DP-DS80D driver instruction manual.

2.7 Print Method

2.7.1 Multiple layout

< Multiple layout >

You can enable multiple layout settings by setting the paper size of the printer driver. If it sends multiple images from the application, the printer driver allocate them automatically as the multiple layout.

Loaded media	Paper Source	Paper size setting	Image size width x height (mm)	Maximum allocation counts
8x10	Roll Paper	(8x4)	207.3x104.6	2
		(8x5)	207.3x130.0	2
		(8x5)_(8x4)	207.3x130.0, 207.3x104.6	2
		(8x6)_(8x4)	207.3x155.4, 207.3x104.6	2
	Cut Paper	(8x4)	207.3x104.6	4 (2 per side)
		(8x5)	207.3x130.0	4 (2 per side)
8x12	Roll Paper	(8x4)	207.3x104.6	3
		(8x5)	207.3x130.0	2
		(8x6)	207.3x155.4	2
		(8x5)_(8x4)	207.3x130.0, 207.3x104.6	2
		(8x6)_(8x4)	207.3x155.4, 207.3x104.6	2
		(8x6)_(8x5)	207.3x155.4, 207.3x130.0	2
		(8x8)_(8x4)	207.3x206.2, 207.3x104.6	2
	Cut Paper	(8x4)	207.3x104.6	6 (3 per side)
		(8x5)	207.3x130.0	4 (2 per side)
		(8x6)	207.3x155.4	4 (2 per side)

Multiple layout is carried out under the following conditions.

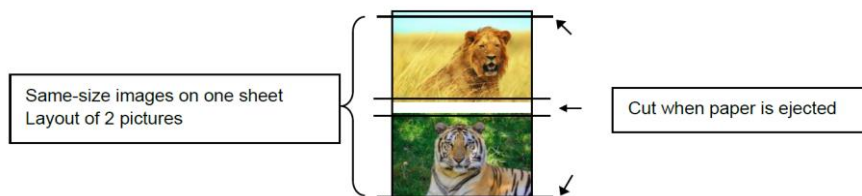
1. Set the paper size of the printer driver to one of the abovementioned paper sizes.
2. Send multiple images from the application

Note)

Because they are carried out by the print job, multiple layout are carried out when there are multiple images in a single job.

If you want to layout the same image, send the same number of images as the number-ofsheets setting.

The printer prints the required screen size at a time and cuts it to the set size when the paper is ejected.



2.7.2 Example of Multi-layout application use

It is almost the same as DP-DS820. See the DP-DS820 driver instruction manual.

For duplex printing settings, see "2.7.3 Duplex Printing".

2.7.3 Duplex Printing

Duplex printing is possible on the DP-DS820DX when cut paper is selected.

Duplex printing can be performed under the following conditions.

1. Select "Cut paper (tray)" in the "Paper Source" on the "2.2.3 Paper/Quality" tab.

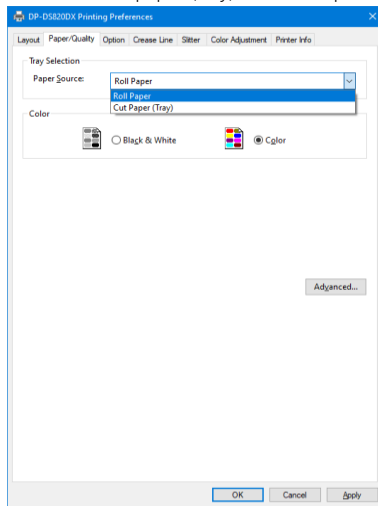


Figure 2.7.3.1 Select Paper Source

2. Select "Flip on Short Edge" or "Flip on Long Edge" orientation under "Print on Both Sides" in the "2.2.1 Layout" tab.

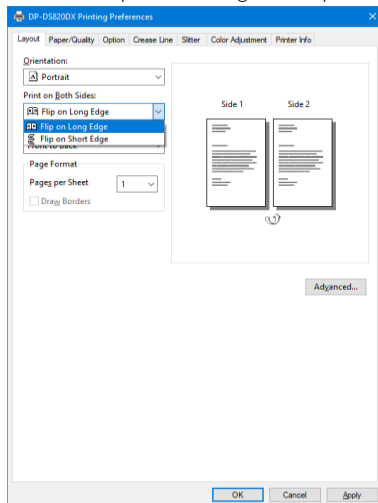


Figure 2.7.3.2 Select Print on Both Sides

Because Duplex printing is run on a job basis, it only works when there are 2 (front and back) or more images in a single job. When there are an odd number of images in 1 job, the back of the final page will be output as a white image. The print method is the same as in "2.7.2 Example of Multi-lyout application use".

Cautions for using Multi-layout in Duplex Printing

When using multi-layout in duplex printing, the images will be laid out as follows. If there is a remainder in transmitted images, the driver will insert empty data images into the layout. The printer will output the empty data as white images.

(8x5)	Even number of prints	<div>image 1</div> <div>image 2</div> <div>image 3</div> <div>image 4</div>	<div>Send on 1 job</div>	<div>image 1</div> <div>image 3</div>	<div>multi image layout allocation to front side data</div>
				<div>image 2</div> <div>image 4</div>	<div>multi-layout allocation to back side data</div>
	Odd number of prints (remainder of 1 print)	<div>image 5</div>		<div>image 5</div>	<div>1 image layout allocation to front side data</div>
				<div>blank</div>	<div>back side data blank</div>
	Even number of prints (remainder of 2 prints)	<div>image 5</div> <div>image 6</div>		<div>image 5</div>	<div>1 image layout allocation to front side data</div>
				<div>image 6</div>	<div>1 image layout allocation to back side data</div>
	Odd number of prints (remainder of 3 prints)	<div>image 5</div> <div>image 6</div> <div>image 7</div>		<div>image 5</div> <div>image 7</div>	<div>multi image layout allocation to front side data</div>
				<div>image 6</div> <div>blank</div>	<div>multi image layout allocation to back side data</div>

As mentioned above, if you send an odd number of pages, the printer will output a blank image.

If you don't want the printer to output a blank image, please send an even number of images.

Chapter 3 Updating the Driver

It is almost the same as DP-DS620. See the DP-DS620 driver instruction manual.

Chapter 4 Driver Removal

It is almost the same as DP-DS620. See the DP-DS620 driver instruction manual.

End of document.